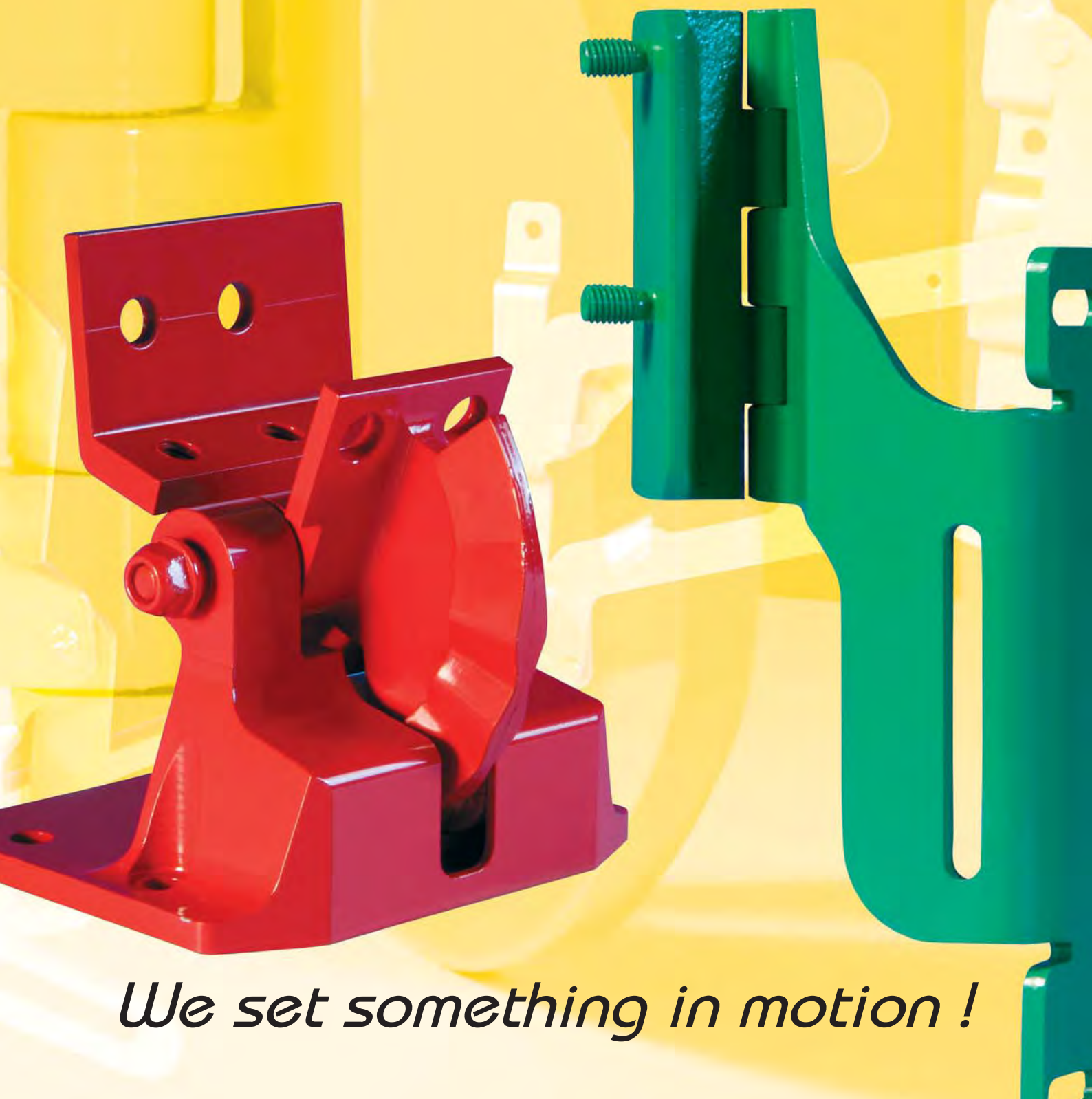
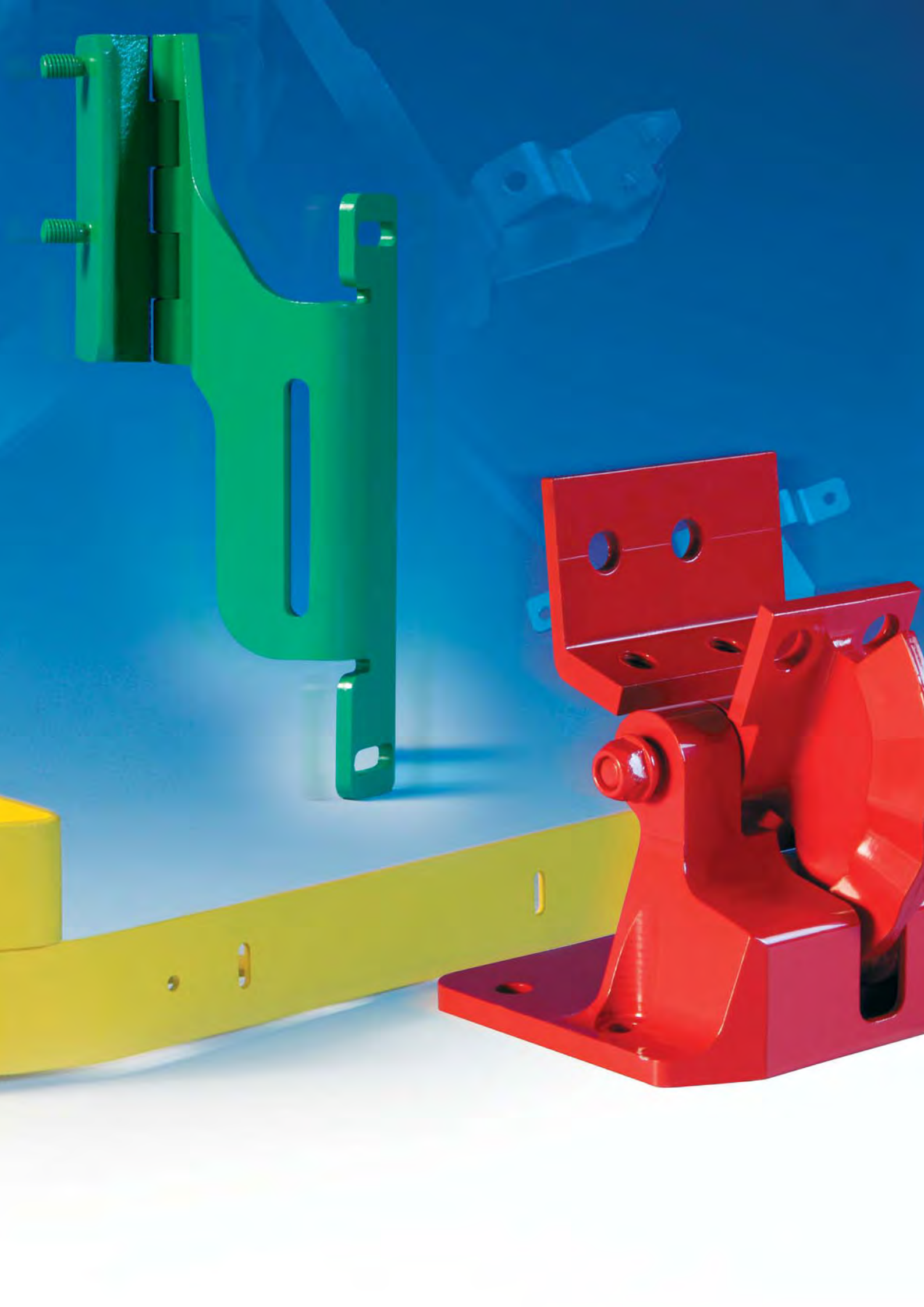




AUTOMOBILSCHARNIERE HASTEN
GmbH + Co. KG



We set something in motion !





We set something in motion !

AHA Automobilscharniere Hasten was founded in Remscheid in 1994. Meanwhile we are working with a staff of approx. 80 persons at the location Remscheid.

Our motto: " We set something in motion " we have decided for a successful concept to produce and develop, individual, custom specific solutions for small and medium series.

In addition to our standard programme we are well-known to our customers as a supplier of special hinges.

- best quality
- utmost flexibility
- ideal adherence to delivery dates
- balanced price- / performance ratio
- responsible environment concept

These qualities are obligatory for the AHA-team. The high customer satisfaction is an evidence for the quality of our work in the market, as well as our ideal and special service for our products. All AHA employees support this idea.

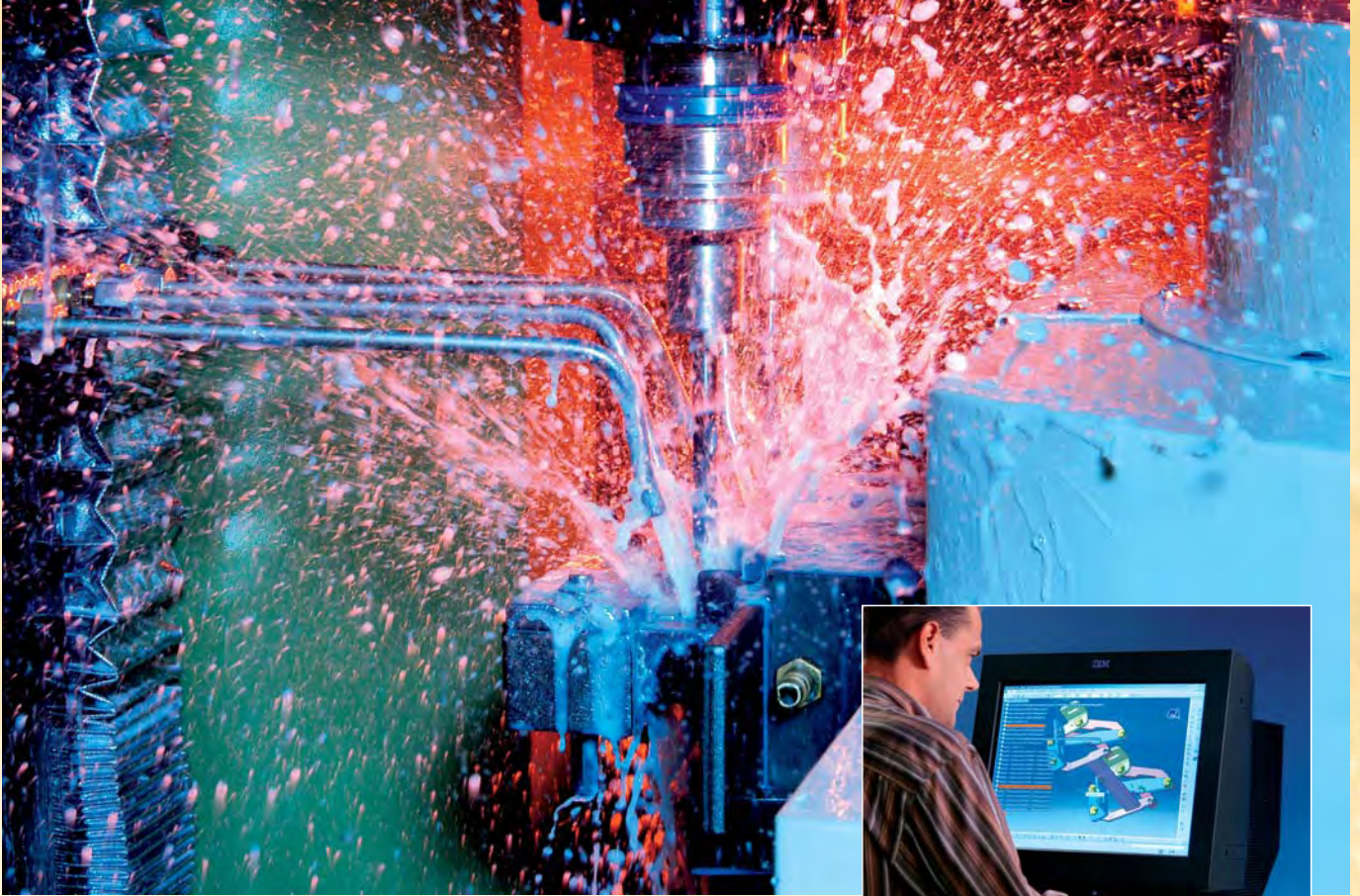


Customer service - we exemplify it !

Our customers experience our advisory skills from the very beginning. For every project a special formed team is responsible for this task. Holistic thinking, listening as well as comprehension, consulting, development, testing and manufacturing are an essential part of our efficient service.

Order processing - we are introducing ourselves !

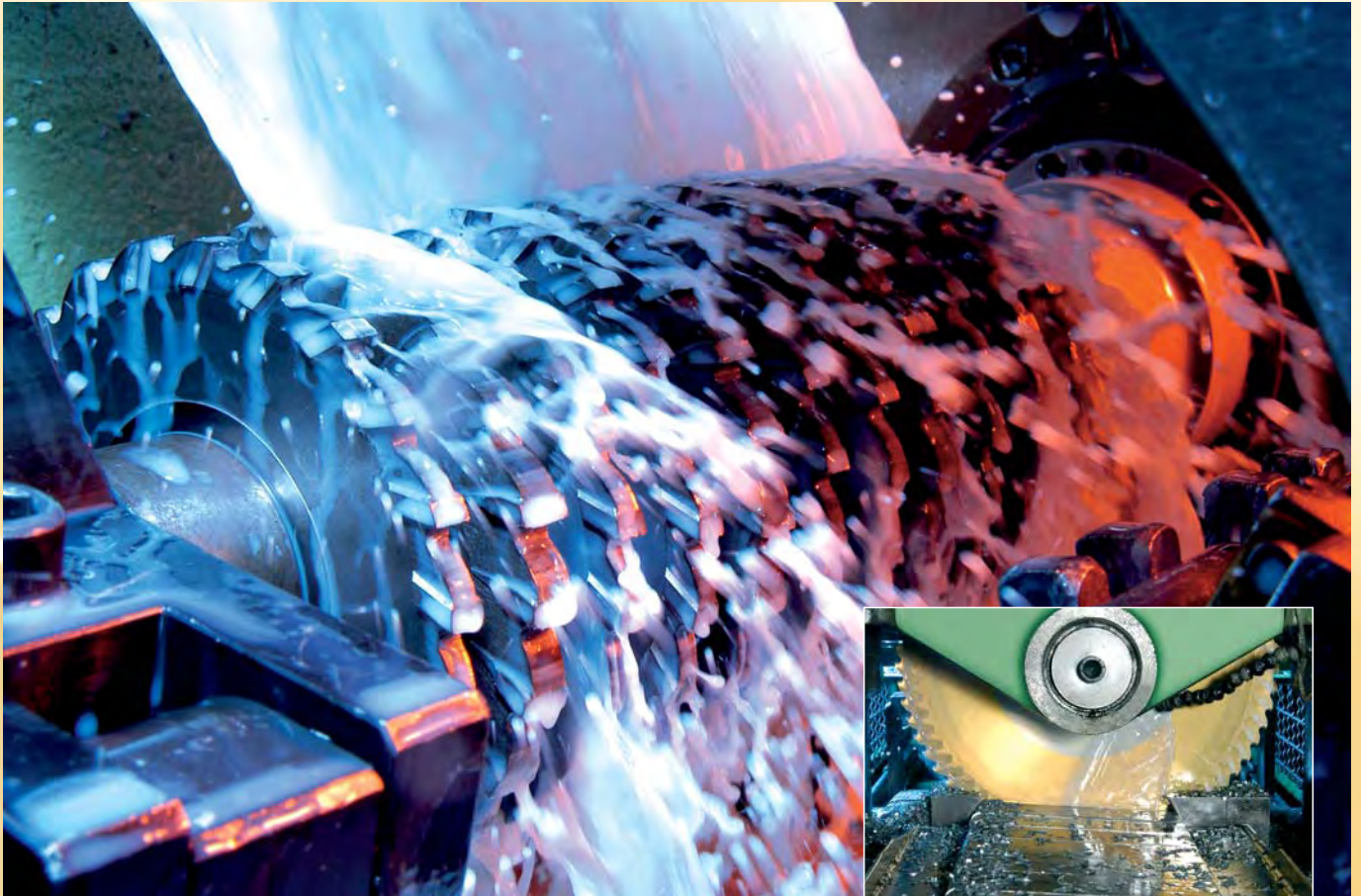
A project manager is your contact person during the order processing. He knows the actual project progress and is available for your questions at any time.



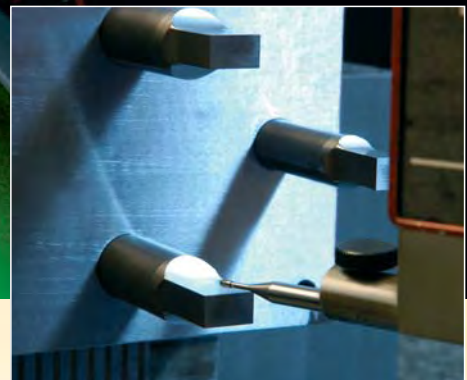
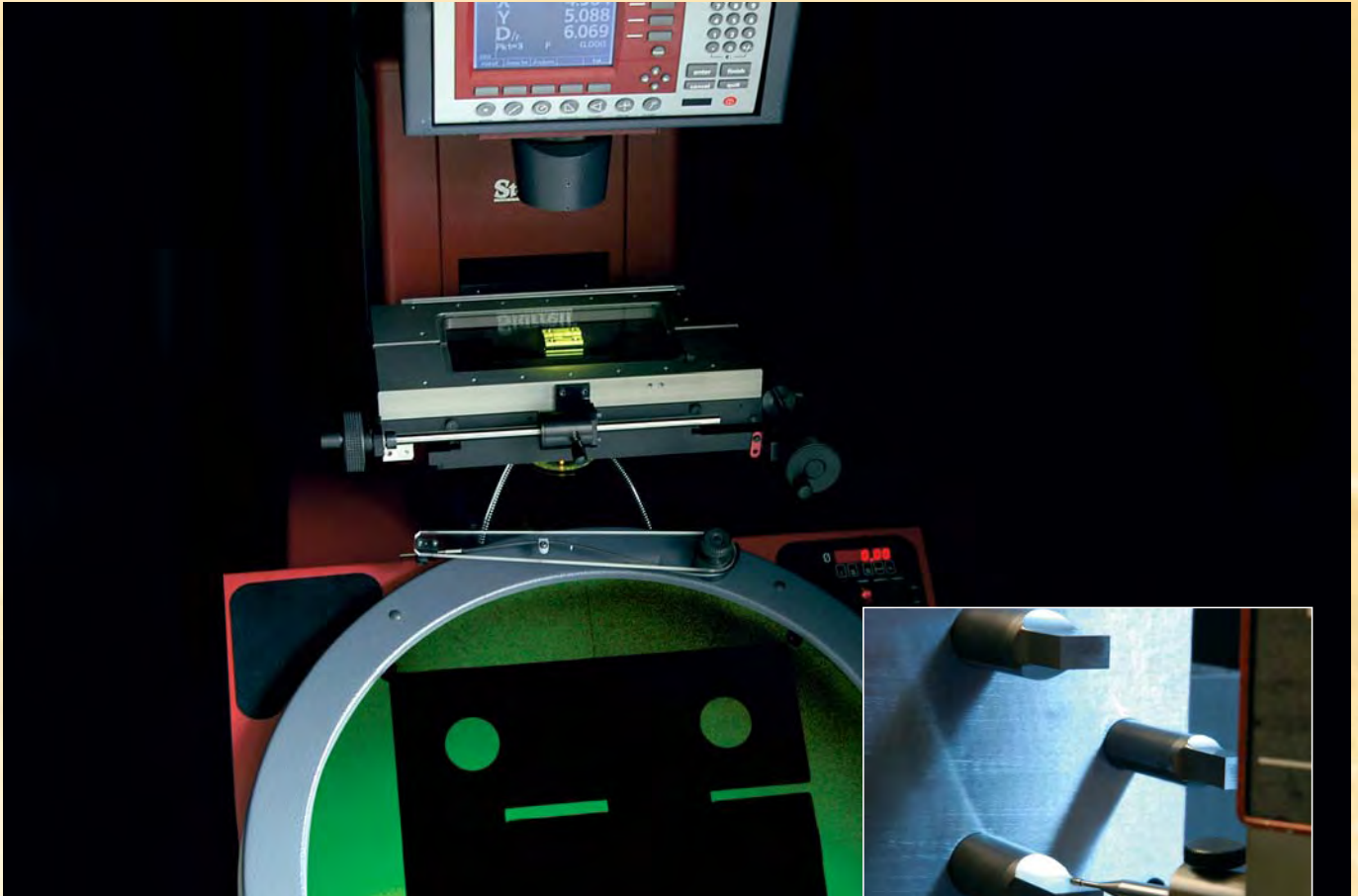
Manufacturing technology - we look ahead

Our requirements regarding technique, guarantees the perfection in our production. The basis of our performance is well-defined in our modern machinery.





Our manufacturing facilities speed up our processing and realise an economical development. We realise shortest delivery dates with our own tool design and construction.



Quality management - we verify it accurately !

Our business objective is high customer satisfaction. Therefore accompanying quality control has an important function in our production process. Exact measurement results assure maximum dimensional accuracy to all components belonging to the processing of hinges.

That's why we guarantee uncompromising constant quality. Our quality management is documented in the certification according to DIN ISO 9001.





Environment protection - we take care of it !

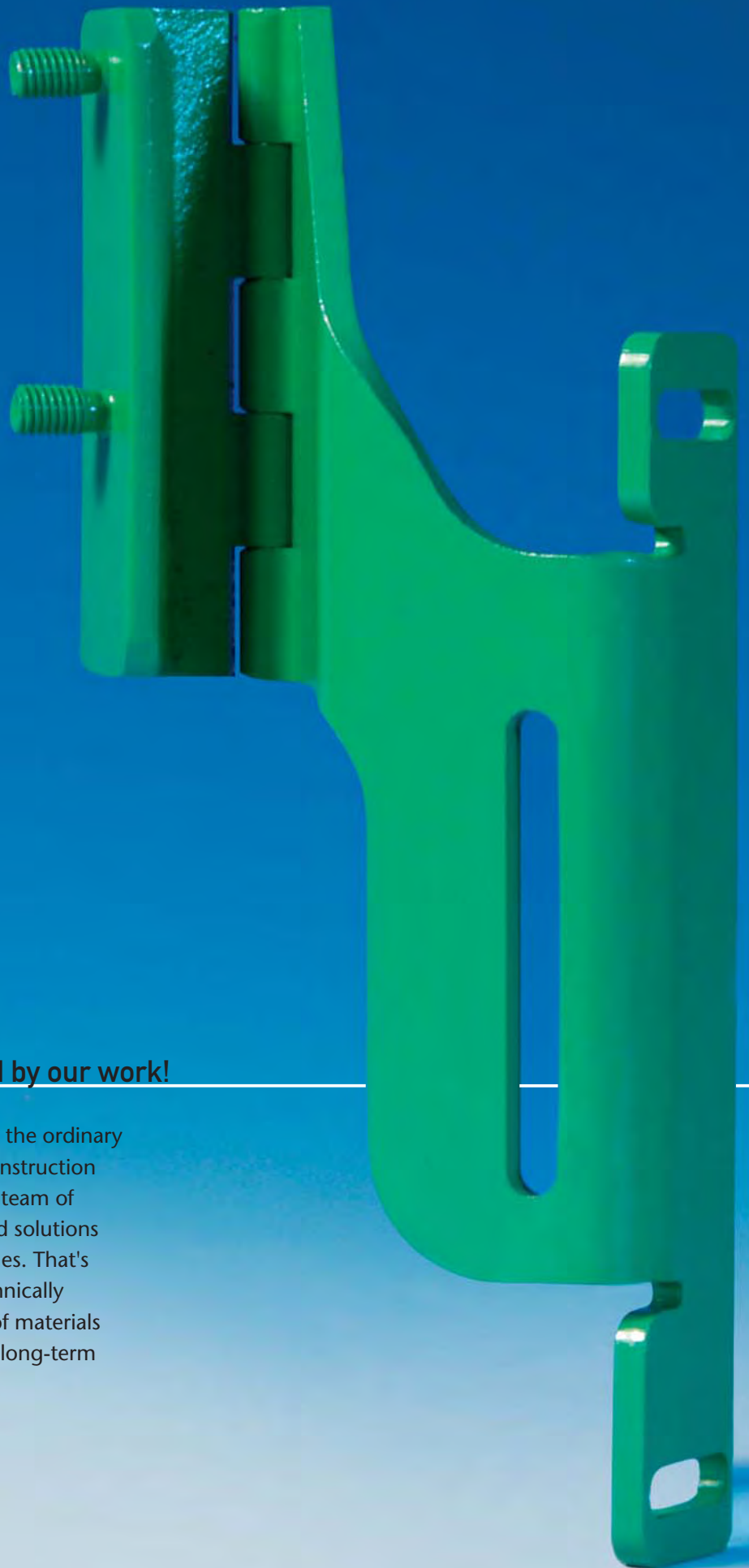
We take care of the protection of our environment.

There are many ways in which we can contribute:

- recycling of production waste
- reprocessing of coolants and lubricants
- ecologically friendly waste management concepts

...for we only have this one earth!



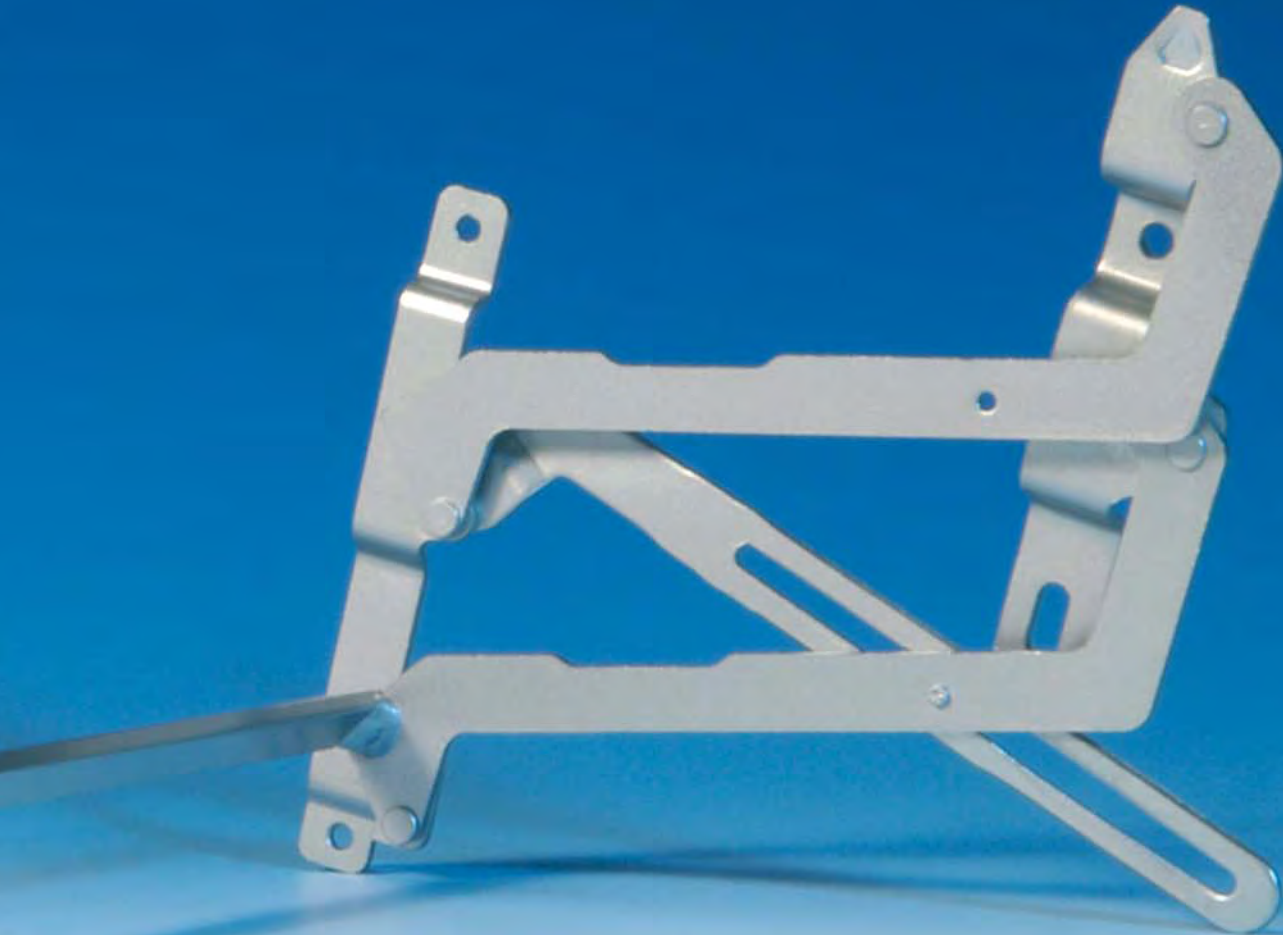


Special product lines - We stand by our work!

Something extraordinary is nothing out of the ordinary for us. We are challenged by every new construction which we meet with special intensity. Our team of specialists works out individual, customised solutions for small and medium-sized production lines. That's our strength! The spectrum of what is technically possible includes both a careful selection of materials as well as a large test programme and the long-term securing of the serial technology.

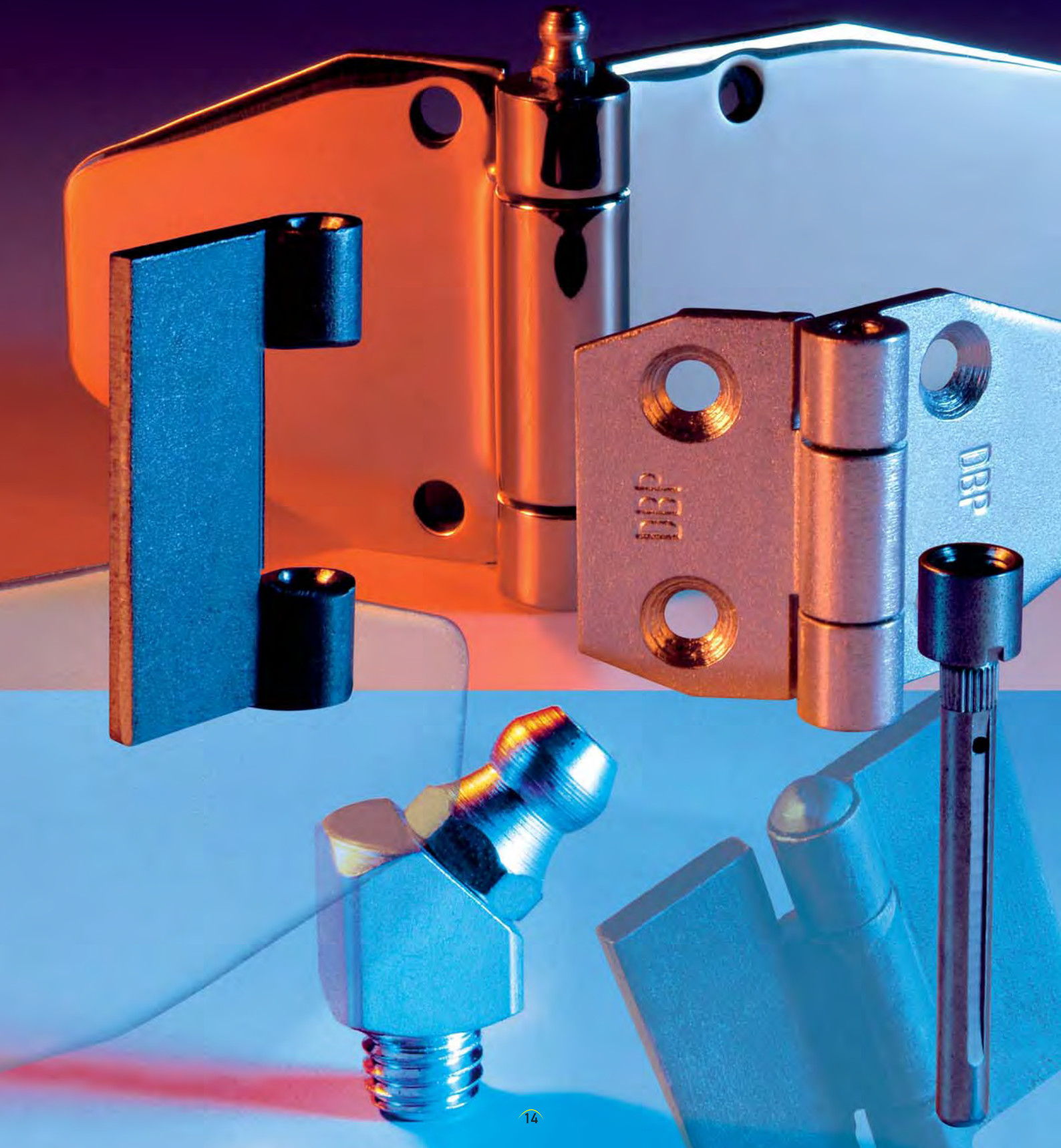








Standard Programme



Straight hinges

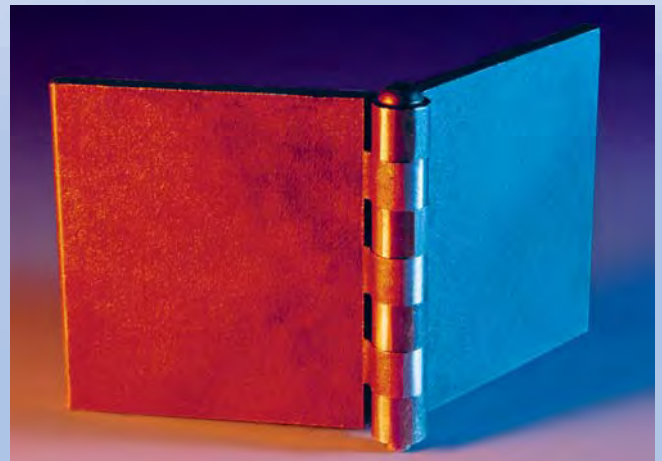
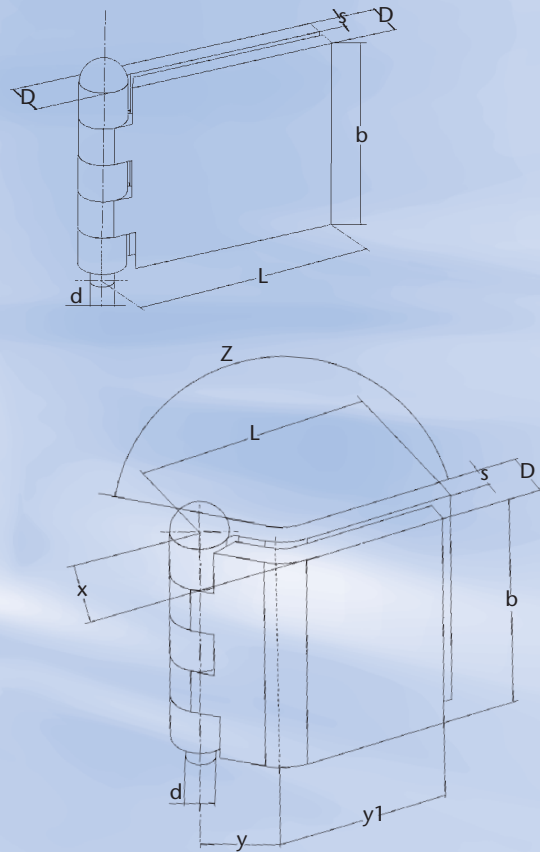
Please state part number when ordering !

Special versions of straight hinges are obtainable with different width of joint and length of flap. Hinges from 5 mm thickness are available with various hinge pins and grease nipples - at extra cost.

Following dimensions in steel EN 10025 (former DIN 17100), surface descaled, opening angle about 260°, available from stock. Technical modifications reserved.

article-no.	b width mm	L length mm	s thick- ness mm	d pin Ø mm	D dimen- sion mm	number of joints	weight a piece kg approx.
standard material S235JR (St 37-2)							
2901.001.00.3	30	40	3	4	8,0	5	0,065
2901.002.00.3	30	60	3	4	8,0	5	0,095
2901.003.00.3	30	30	5	6	12,0	5	0,085
2901.004.00.3	30	60	5	6	12,0	5	0,160
2901.005.00.3	40	20	3	4	8,0	5	0,042
2901.006.00.3	40	40	3	4	8,0	5	0,080
2901.007.00.3	40	60	3	4	8,0	5	0,125
2901.008.00.3	40	30	5	6	12,0	5	0,115
2901.009.00.3	40	60	5	6	12,0	5	0,210
2901.010.00.3	40	80	5	6	12,0	5	0,280
2901.011.00.3	40	90	5	6	12,0	5	0,310
2901.012.00.3	40	100	5	6	12,0	5	0,340
2901.067.00.3	40	80	6	8	15,0	5	0,330
2901.013.00.3	40	120	5	6	12,0	5	0,395
2901.016.00.3	50	40	3	4	8,0	5	0,105
2901.017.00.3	50	60	3	4	8,0	5	0,145
2901.018.00.3	50	30	5	6	12,0	5	0,145
2901.019.00.3	50	60	5	6	12,0	5	0,260
2901.020.00.3	50	80	5	6	12,0	5	0,335
2901.021.00.3	50	100	5	6	12,0	5	0,415
2901.022.00.3	50	120	5	6	12,0	5	0,490
2901.023.00.3	50	80	6	8	15,0	5	0,415
2901.024.00.3	50	100	6	8	15,0	5	0,510
2901.025.00.3	50	120	6	8	15,0	5	0,595
2901.026.00.3	60	60	5	6	12,0	5	0,315
2901.027.00.3	60	120	5	6	12,0	5	0,590
2901.028.00.3	60	80	6	8	15,0	5	0,505
2901.029.00.3	60	100	6	8	15,0	5	0,620
2901.030.00.3	60	120	6	8	15,0	5	0,715
2901.032.00.3	70	80	6	8	15,0	7	0,575
2901.033.00.3	70	100	6	8	15,0	7	0,720
2901.034.00.3	70	120	6	8	15,0	7	0,830
2901.036.00.3	70	80	7	8	16,5	7	0,670
2901.037.00.3	70	100	7	8	16,5	7	0,810
2901.038.00.3	70	120	7	8	16,5	7	1,050
2901.040.00.3	80	80	6	8	15,0	7	0,650
2901.041.00.3	80	100	6	8	15,0	7	0,810
2901.042.00.3	80	120	6	8	15,0	7	1,240
2901.044.00.3	80	80	7	8	16,5	7	0,765
2901.045.00.3	80	100	7	8	16,5	7	0,940
2901.046.00.3	80	120	7	8	16,5	7	1,175
2901.049.00.3	100	100	7	8	16,5	7	1,235
2901.065.00.3	100	100	6	8	15,0	7	1,005
stainless steel version 1.4301 (X5CrNi18-10)							
2908.001.00.0	50	50	5	6	12,0	5	0,220
2908.002.00.0	50	30	5	6	12,0	5	0,145

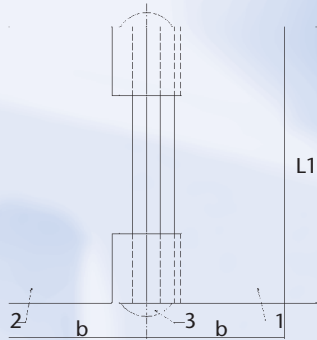
Special version of cranked hinges: same material as straight hinges. Dimension X, Y and Z by your request.



Riveted and bolted hinge plates

Riveted hinge plate N

designation of a complete riveted hinge plate N No 7
 e.g. N 7 - art.-no. 2905.035.00.0
 assembled as per shape 1
 = riveted hinge plate N 7 DIN 31 211

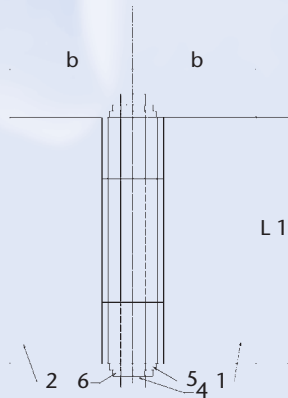


shape 1



Bolted hinge plate B

designation of a complete bolted hinge plate B No 12
 e.g. B 12 - art.-no. 2906.114.00.0
 assembled as per shape 2
 = bolted hinge plate B 12 DIN 31 211



shape 2

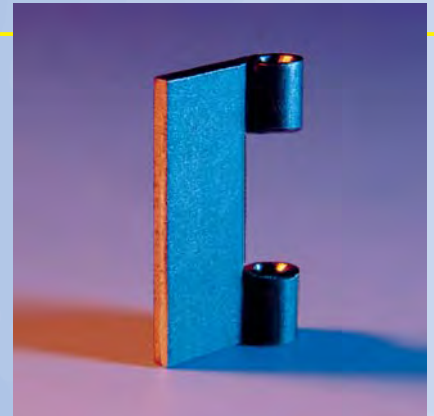


shape designation N B	riveted hinge plate		bolted hinge plate		hinge plate DIN 31212		corresponding parts		washer DIN 433 St	cotter DIN 94 St	L1	weight kg- of complete hinge plate shape 1 u. 2	
	shape 1 article-no.	shape 2 article-no.	shape 1 article-no.	shape 2 article-no.	female	male	rivet DIN 7341 St	bolt DIN 1433 St 37				riveted	bolted
1 2	2905.029.00.0	2905.030.00.0	2906.103.00.0	2906.104.00.0	3/4 x 20	3/4 x 20	A 4 h 11 x 42	4 h 11 x 50 x 43	4,3	1 x 8	40	0,046	0,047
3 4	2905.031.00.0	2905.032.00.0	2906.105.00.0	2906.106.00.0	3/4 x 20	3/4 x 40	A 4 h 11 x 42	4 h 11 x 50 x 43	4,3	1 x 8	40	0,065	0,066
5 6	2905.033.00.0	2905.034.00.0	2906.107.00.0	2906.108.00.0	3/4 x 40	3/4 x 40	A 4 h 11 x 42	4 h 11 x 50 x 43	4,3	1 x 8	40	0,084	0,085
7 8	2905.035.00.0	2905.036.00.0	2906.109.00.0	2906.110.00.0	5/6 x 30	5/6 x 30	A 6 h 11 x 63	6 h 11 x 75 x 65,5	6,4	1,5 x 12	60	0,168	0,170
9 10	2905.037.00.0	2905.038.00.0	2906.111.00.0	2906.112.00.0	5/6 x 30	5/6 x 60	A 6 h 11 x 63	6 h 11 x 75 x 65,5	6,4	1,5 x 12	60	0,239	0,242
11 12	2905.039.00.0	2905.040.00.0	2906.113.00.0	2906.114.00.0	5/6 x 30	5/9 x 30	A 6 h 11 x 63	6 h 11 x 75 x 65,5	6,4	1,5 x 12	60	0,173	0,176
13 14	2905.041.00.0	2905.042.00.0	2906.115.00.0	2906.116.00.0	5/6 x 30	5/9 x 60	A 6 h 11 x 63	6 h 11 x 75 x 65,5	6,4	1,5 x 12	60	0,238	0,241
15 16	2905.043.00.0	2905.044.00.0	2906.117.00.0	2906.118.00.0	5/6 x 30	5/13 x 30	A 6 h 11 x 63	6 h 11 x 75 x 65,5	6,4	1,5 x 12	60	0,178	0,181
17 18	2905.045.00.0	2905.046.00.0	2906.119.00.0	2906.120.00.0	5/6 x 30	5/13 x 60	A 6 h 11 x 63	6 h 11 x 75 x 65,5	6,4	1,5 x 12	60	0,252	0,255
19 20	2905.047.00.0	2905.048.00.0	2906.121.00.0	2906.122.00.0	5/6 x 60	5/6 x 60	A 6 h 11 x 63	6 h 11 x 75 x 65,5	6,4	1,5 x 12	60	0,310	0,313
21 22	2905.049.00.0	2905.050.00.0	2906.123.00.0	2906.124.00.0	5/6 x 60	5/9 x 30	A 6 h 11 x 63	6 h 11 x 75 x 65,5	6,4	1,5 x 12	60	0,244	0,247
23 24	2905.051.00.0	2905.052.00.0	2906.125.00.0	2906.126.00.0	5/6 x 60	5/9 x 60	A 6 h 11 x 63	6 h 11 x 75 x 65,5	6,4	1,5 x 12	60	0,319	0,322
25 26	2905.053.00.0	2905.054.00.0	2906.127.00.0	2906.128.00.0	5/6 x 60	5/13 x 30	A 6 h 11 x 63	6 h 11 x 75 x 65,5	6,4	1,5 x 12	60	0,249	0,252
27 28	2905.055.00.0	2905.056.00.0	2906.129.00.0	2906.130.00.0	5/6 x 60	5/13 x 60	A 6 h 11 x 63	6 h 11 x 75 x 65,5	6,4	1,5 x 12	60	0,323	0,326
29 30	2905.057.00.0	2905.058.00.0	2906.131.00.0	2906.132.00.0	5/9 x 30	5/9 x 30	A 6 h 11 x 63	6 h 11 x 75 x 65,5	6,4	1,5 x 12	60	0,178	0,181
31 32	2905.059.00.0	2905.060.00.0	2906.133.00.0	2906.134.00.0	5/9 x 30	5/9 x 60	A 6 h 11 x 63	6 h 11 x 75 x 65,5	6,4	1,5 x 12	60	0,253	0,256
33 34	2905.061.00.0	2905.062.00.0	2906.135.00.0	2906.136.00.0	5/9 x 30	5/13 x 30	A 6 h 11 x 63	6 h 11 x 75 x 65,5	6,4	1,5 x 12	60	0,183	0,186
35 36	2905.063.00.0	2905.064.00.0	2906.137.00.0	2906.138.00.0	5/9 x 30	5/13 x 60	A 6 h 11 x 63	6 h 11 x 75 x 65,5	6,4	1,5 x 12	60	0,257	0,260
37 38	2905.065.00.0	2905.066.00.0	2906.139.00.0	2906.140.00.0	5/9 x 60	5/9 x 60	A 6 h 11 x 63	6 h 11 x 75 x 65,5	6,4	1,5 x 12	60	0,328	0,331
39 40	2905.067.00.0	2905.068.00.0	2906.141.00.0	2906.142.00.0	5/9 x 60	5/13 x 30	A 6 h 11 x 63	6 h 11 x 75 x 65,5	6,4	1,5 x 12	60	0,258	0,261
41 42	2905.069.00.0	2905.070.00.0	2906.143.00.0	2906.144.00.0	5/9 x 60	5/13 x 60	A 6 h 11 x 63	6 h 11 x 75 x 65,5	6,4	1,5 x 12	60	0,332	0,335
43 44	2905.071.00.0	2905.072.00.0	2906.145.00.0	2906.146.00.0	5/13 x 30	5/13 x 30	A 6 h 11 x 63	6 h 11 x 75 x 65,5	6,4	1,5 x 12	60	0,188	0,191
45 46	2905.073.00.0	2905.074.00.0	2906.147.00.0	2906.148.00.0	5/13 x 30	5/13 x 60	A 6 h 11 x 63	6 h 11 x 75 x 65,5	6,4	1,5 x 12	60	0,262	0,265
47 48	2905.075.00.0	2905.076.00.0	2906.149.00.0	2906.150.00.0	5/13 x 60	5/13 x 60	A 6 h 11 x 63	6 h 11 x 75 x 65,5	6,4	1,5 x 12	60	0,336	0,339
49 50	2905.077.00.0	2905.078.00.0	2906.151.00.0	2906.152.00.0	7/8 x 40	7/8 x 40	A 8 h 11 x 83	8 h 11 x 95 x 86	8,4	2 x 15	80	0,415	0,423
51 52	2905.079.00.0	2905.080.00.0	2906.153.00.0	2906.154.00.0	7/8 x 40	7/8 x 80	A 8 h 11 x 83	8 h 11 x 95 x 86	8,4	2 x 15	80	0,591	0,599
53 54	2905.081.00.0	2905.082.00.0	2906.155.00.0	2906.156.00.0	7/8 x 40	7/18 x 40	A 8 h 11 x 83	8 h 11 x 95 x 86	8,4	2 x 15	80	0,444	0,452
55 56	2905.083.00.0	2905.084.00.0	2906.157.00.0	2906.158.00.0	7/8 x 40	7/18 x 80	A 8 h 11 x 83	8 h 11 x 95 x 86	8,4	2 x 15	80	0,626	0,634
57 58	2905.085.00.0	2905.086.00.0	2906.159.00.0	2906.160.00.0	7/8 x 80	7/8 x 80	A 8 h 11 x 83	8 h 11 x 95 x 86	8,4	2 x 15	80	0,767	0,775
59 60	2905.087.00.0	2905.088.00.0	2906.161.00.0	2906.162.00.0	7/8 x 80	7/18 x 40	A 8 h 11 x 83	8 h 11 x 95 x 86	8,4	2 x 15	80	0,620	0,628
61 62	2905.089.00.0	2905.090.00.0	2906.163.00.0	2906.164.00.0	7/8 x 80	7/18 x 80	A 8 h 11 x 83	8 h 11 x 95 x 86	8,4	2 x 15	80	0,802	0,810
63 64	2905.091.00.0	2905.092.00.0	2906.165.00.0	2906.166.00.0	7/18 x 40	7/18 x 40	A 8 h 11 x 83	8 h 11 x 95 x 86	8,4	2 x 15	80	0,473	0,481
65 66	2905.093.00.0	2905.094.00.0	2906.167.00.0	2906.168.00.0	7/18 x 40	7/18 x 80	A 8 h 11 x 83	8 h 11 x 95 x 86	8,4	2 x 15	80	0,655	0,663
67 68	2905.095.00.0	2905.096.00.0	2906.169.00.0	2906.170.00.0	7/18 x 80	7/18 x 80	A 8 h 11 x 83	8 h 11 x 95 x 86	8,4	2 x 15	80	0,835	0,843
69 70	2905.097.00.0	2905.098.00.0			10/13x110	10/13x110	A13h11 x 113				100	0,930	0,930

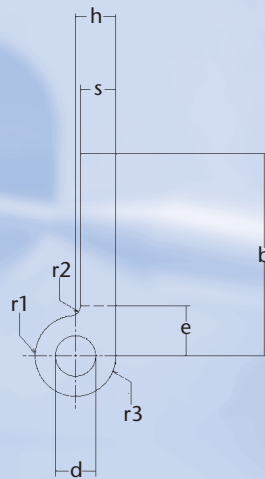
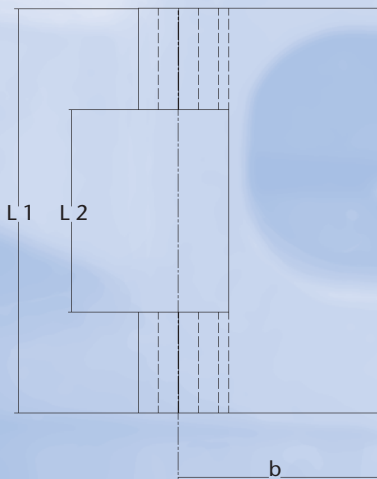
Single parts of hinge plates

Female of hinge plate A 5/13 x 30
 means a female of a hinge plate A
 thickness $s = 5$ mm,
 height $h = 13$ mm,
 width $b = 30$ mm,
 article-no. 2907.014.00.0

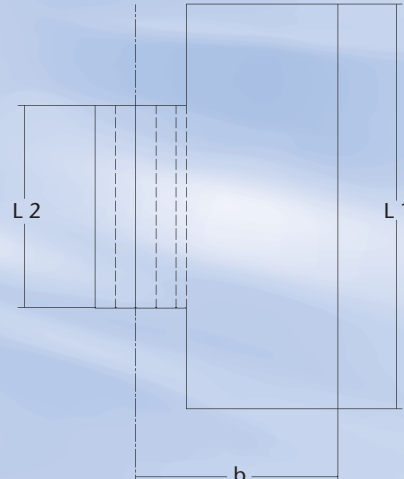
Male of hinge plate I 5/6 x 60
 means a male of a hinge plate I
 thickness $s = 5$ mm,
 height $h = 6$ mm,
 width $b = 60$ mm,
 article-no. 2907.007.00.0



female A



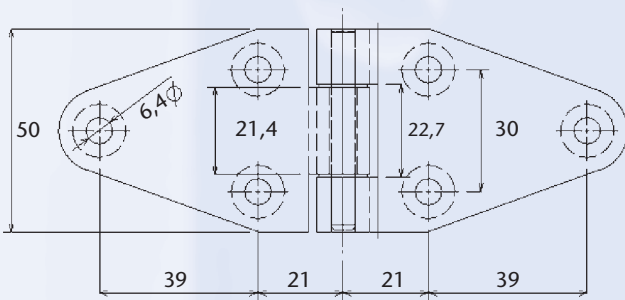
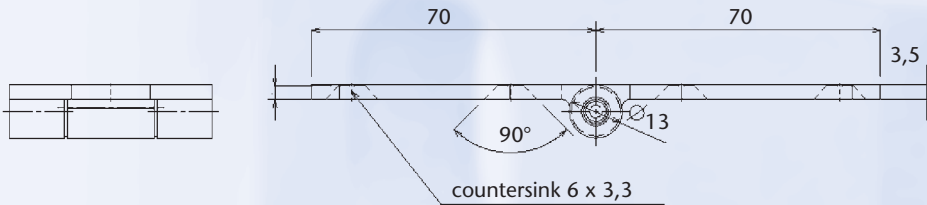
male I



male article-no.	female article-no.	thickness mm	height mm	width mm	$\pm 0,3$ mm	e mm	L1 mm	L2 mm	r1 mm	r2 mm	r3 mm	weight kg
2907.001.00.0	2907.002.00.0	3	4	20	4	5	40	20	4	1,6	4	0,021
2907.003.00.0	2907.004.00.0	3	4	40	4	5	40	20	4	1,6	4	0,040
2907.005.00.0	2907.006.00.0	5	6	30	6	7	60	30	6	2,5	6	0,077
2907.007.00.0	2907.008.00.0	5	6	60	6	7	60	30	6	2,5	6	0,148
2907.009.00.0	2907.010.00.0	5	9	30	6	7	60	30	6	2,5	9	0,082
2907.011.00.0	2907.012.00.0	5	9	60	6	7	60	30	6	2,5	9	0,157
2907.013.00.0	2907.014.00.0	5	13	30	6	7	60	30	6	2,5	13	0,087
2907.015.00.0	2907.016.00.0	5	13	60	6	7	60	30	6	2,5	13	0,161
2907.017.00.0	2907.018.00.0	7	8	40	8	9	80	40	8	4	8	0,191
2907.019.00.0	2907.020.00.0	7	8	80	8	9	80	40	8	4	8	0,376
2907.021.00.0	2907.022.00.0	7	18	40	8	9	80	40	8	4	18	0,220
2907.023.00.0	2907.024.00.0	7	18	80	8	9	80	40	8	4	18	0,402
2907.025.00.0	2907.026.00.0	10	13	110	13	14	100	50	13	6	13	0,930

Maintenance free hinges made of profile steel

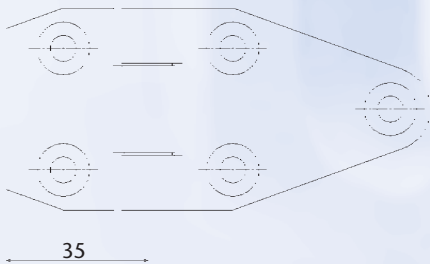
with and without holes for screw or riveted bolts $\varnothing 6,4$ mm,
 surface DIN EN 12329 Fe//Zn 12//B,
 assembled with zinc-plated hinge pin 65 303 and
 metaloplast bush 80712, material S235JR



article-no. 2939.064.00.0 - holed, countersunk

article-no. 2939.065.00.0 - unholed

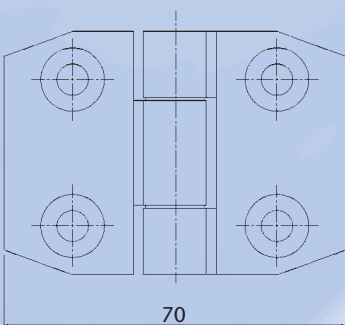
article-no. 2939.070.00.0 - holed



article-no. 2939.066.00.0 - holed, countersunk

article-no. 2939.067.00.0 - unholed

article-no. 2939.071.00.0 - holed



article-no. 2939.068.00.0 - holed, countersunk

article-no. 2939.069.00.0 - unholed

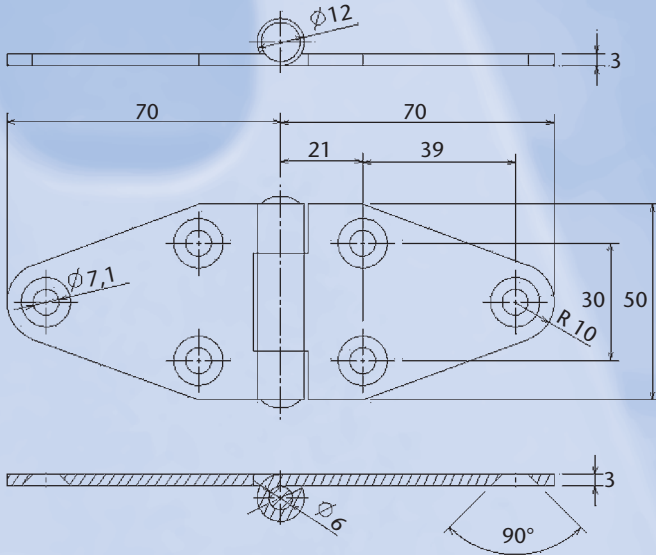
article-no. 2939.072.00.0 - holed



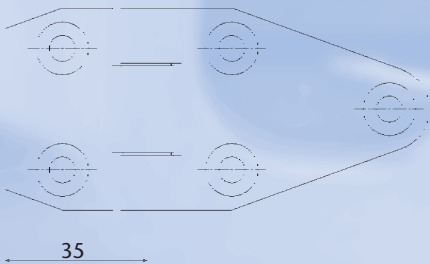
Stainless steel hinges - rolled version

Stainless steel

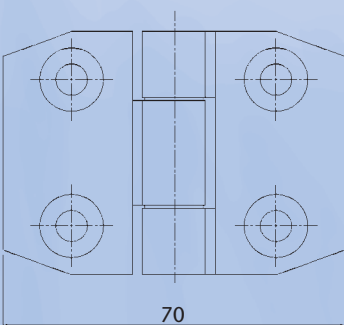
with and without holes for screw or riveted bolts $\varnothing 7,1$ mm,
assembled with hinge pin 65 303
material X5CrNi 18-10



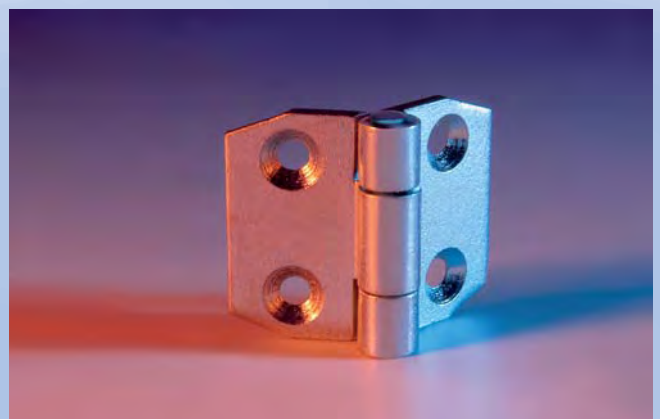
- article-no. 2940.064.00.0 - holed, countersunk
- article-no. 2940.065.00.0 - unholed
- article-no. 2940.070.00.0 - holed



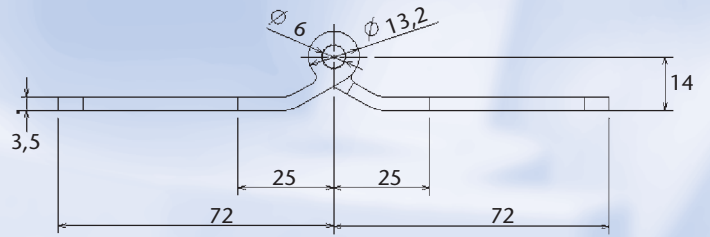
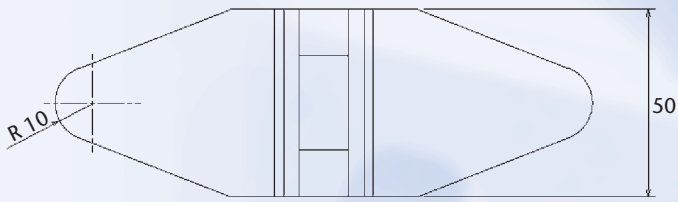
- article-no. 2940.066.00.0 - holed, countersunk
- article-no. 2940.067.00.0 - unholed
- article-no. 2940.071.00.0 - holed



- article-no. 2940.068.00.0 - holed, countersunk
- article-no. 2940.069.00.0 - unholed
- article-no. 2940.072.00.0 - holed

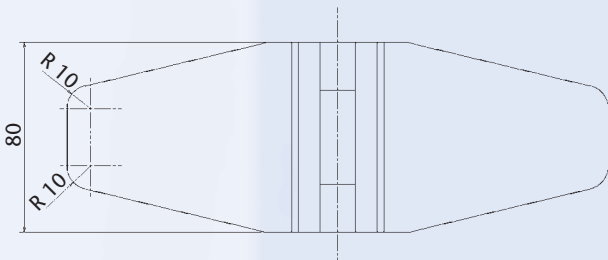
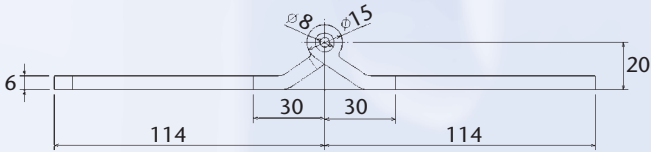


Pantehnicon van hinges - profile version -



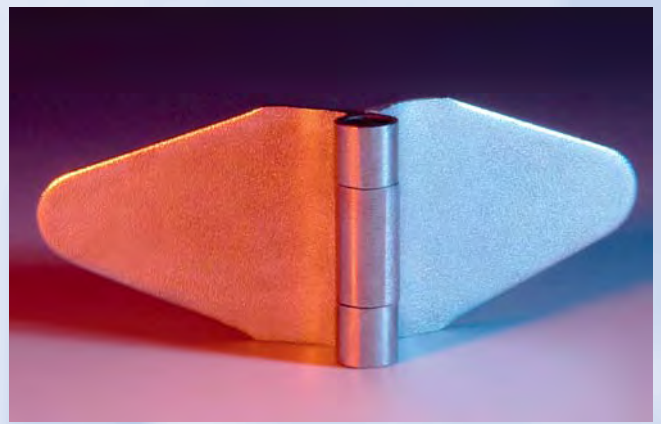
article-no. 2939.163.00.0

surface zinc-plated, maintenance free version,
also available with grease pin and grease nipple.

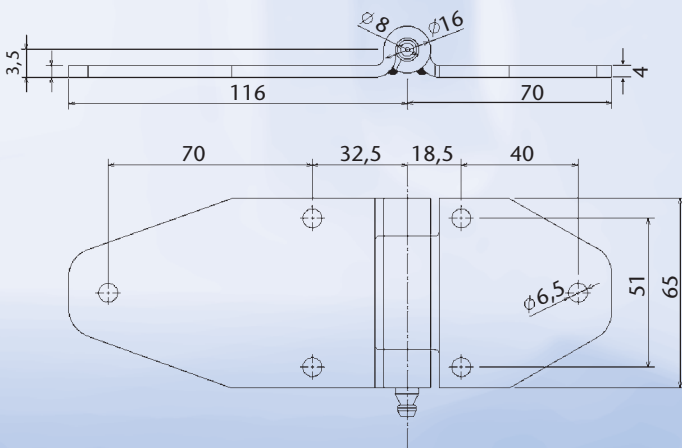


article-no. 2939.136.00.0

surface zinc-plated, maintenance free version,
also available with grease pin and grease nipple.



Pantehnicon van hinges - rolled version -



article-no. 1207.601.00.0

surface zinc-plated, both flaps with three holes each,
assembled with hinge pin 65104, grease nipple 64505



Stainless steel

article-no. 1207.603.00.0

material 1.4301, untreated

article-no. 1207.604.00.0

material 1.4301, topface dull polishing

article-no. 1207.605.00.0

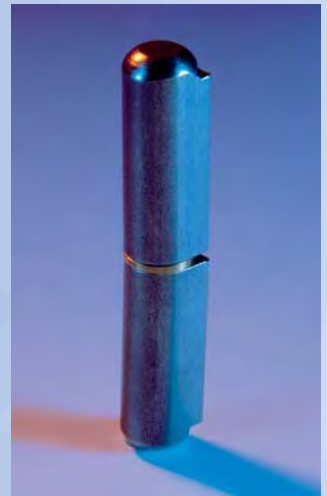
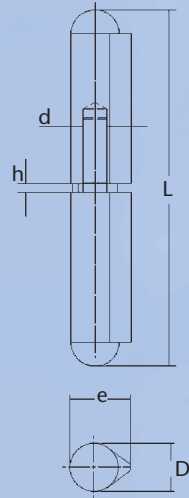
material 1.4301, topface electrolyte polishing

Technical modifications reserved.

Weld-on hinges - Round end

Solid version,
single parts can be supplied ex stock

Also available in aluminium.

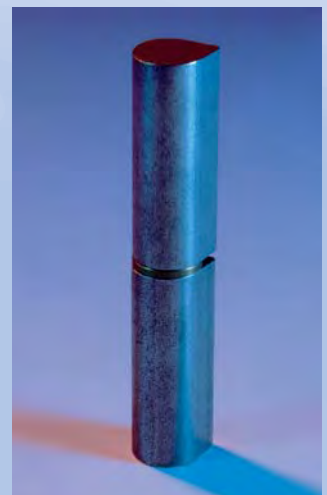
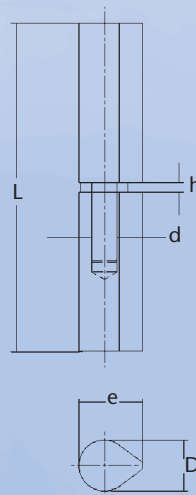


with fixed steel pin	with loose steel pin	with fixed brass pin	with loose brass pin	L	d Ø	h	D	e	weight 100 pieces kg approx.
article-no.	article-no.	article-no.	article-no.	mm	mm	mm	mm	mm	
material C15Pb-1.0403									
2401.601.00.0	2401.621.00.0	2401.611.00.0	2401.632.00.0	40	5	1,6	8	9,5	1,5
2401.602.00.0	2401.622.00.0	2401.612.00.0	2401.633.00.0	50	5	1,6	8	9,5	2,1
2401.603.00.0	2401.623.00.0	2401.613.00.0	2401.634.00.0	60	6	1,8	10	12,0	3,5
2401.604.00.0	2401.624.00.0	2401.614.00.0	2401.635.00.0	70	6	1,8	11	13,0	5,5
2401.605.00.0	2401.625.00.0	2401.615.00.0	2401.636.00.0	80	8	1,8	13	15,5	8,1
2401.606.00.0	2401.626.00.0	2401.616.00.0	2401.637.00.0	100	10	2,2	16	20,0	12,2
2401.607.00.0	2401.627.00.0	2401.617.00.0	2401.638.00.0	120	11	2,2	16	20,0	19,6
2401.608.00.0	2401.628.00.0	2401.618.00.0	2401.639.00.0	135	12	2,5	18	21,0	33,5
2401.609.00.0	2401.629.00.0	2401.619.00.0	2401.640.00.0	150	13	2,8	20	25,5	40,0
2401.610.00.0	2401.630.00.0	2401.620.00.0	2401.641.00.0	180	14	2,8	20	25,5	48,0
2401.644.00.0	2401.631.00.0	2401.643.00.0	2401.642.00.0	200	16	3,0	23	27,0	70,0
material X8CrNiS 18-9									
2401.670.00.0				60	6	1,8	10	12,0	4,0
2401.671.00.0				80	8	1,8	13	15,5	7,0
2401.672.00.0				100	10	2,2	16	20,0	17,5
2401.673.00.0				120	11	2,2	16	20,0	21,0
2401.674.00.0				150	13	2,8	20	25,5	30,0
2401.675.00.0				180	14	2,8	20	25,5	50,0

Weld-on hinges - Flat end

Solid version,
example of application.
material C15Pb-1.0403

8816 with fixed steel pin	8715 with fixed brass pin	L	d Ø	h	D	e	weight 100 pieces kg approx.
article-no.	article-no.	mm	mm	mm	mm	mm	
2401.680.00.0	2401.690.00.0	45	5	1,6	8	9,5	1,7
2401.681.00.0	2401.691.00.0	60	6	1,8	10	12,0	4,0
2401.682.00.0	2401.692.00.0	80	7	1,8	13	15,5	7,0
2401.683.00.0	2401.693.00.0	100	9	2,2	16	20,0	17,5
2401.684.00.0	2401.694.00.0	120	9	2,2	16	20,0	21,0
2401.685.00.0	2401.695.00.0	140	11	2,5	20	25,0	30,0
2401.686.00.0	2401.696.00.0	160	12	2,8	20	25,0	45,0
2401.687.00.0	2401.697.00.0	180	13	2,8	20	25,0	50,0
2401.688.00.0	2401.698.00.0	200	13	3,0	23	28,5	68,0

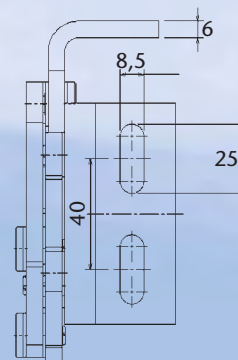
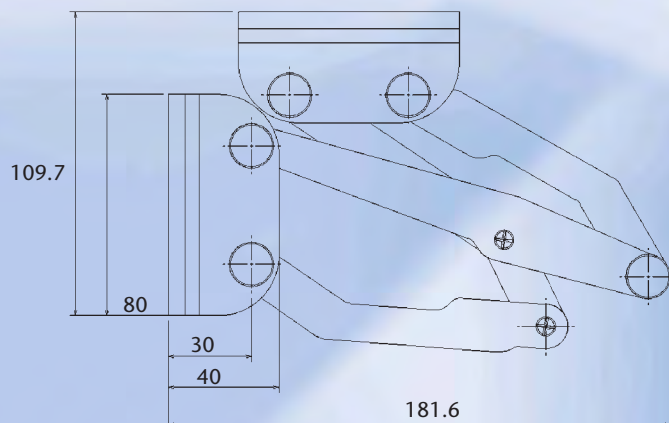


Multi-Joint Hinges

with bushings free of maintenance,
 manufactured of S 235 JR,
 zinc coated DIN EN 12329 Fe//Zn8//B



For special request we design multi-joint hinges with different motion-sequence and different surface treatment.



Rolled hinges DIN 7954

with riveted or loose pin

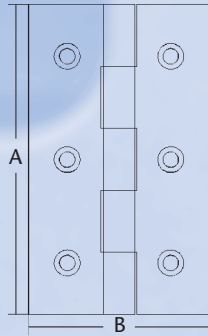
material: steel, brass, aluminium, stainless-steel

types of finish: steel bright, zinc plated, yellow passivated

hole pattern: according to your request

shape A

narrow



punched DIN 7954 A	A	B	s	screws	surface	packing weight unit	weight
	height	width	thickness				
article-no.	mm	mm	mm	pcs.	mm		kg / %
2501.011.00.0	25	20	0,8	4	2,5	yellow passivated	50 0,5
2501.011.71.0	25	20	0,8	4	2,5	zinc plated	50 0,5
2501.012.00.0	30	22	0,9	4	2,5	yellow passivated	50 0,8
2501.012.71.0	30	22	0,9	4	2,5	zinc plated	50 0,8
2501.013.00.0	40	26	0,9	4	2,5	yellow passivated	50 1,2
2501.013.71.0	40	26	0,9	4	2,5	zinc plated	50 1,2
2501.015.00.0	50	31	1,2	6	3,0	yellow passivated	20 2,1
2501.015.71.0	50	31	1,2	6	3,0	zinc plated	20 2,1
2501.016.00.0	60	34	1,4	6	3,0	yellow passivated	20 3,1
2501.016.71.0	60	34	1,4	6	3,0	zinc plated	20 3,1
2501.017.00.0	70	38	1,4	6	3,0	yellow passivated	20 4,1
2501.017.71.0	70	38	1,4	6	3,0	zinc plated	20 4,1
2501.018.00.0	80	41	1,5	6	3,5	yellow passivated	20 4,8
2501.018.71.0	80	41	1,5	6	3,5	zinc plated	20 4,8
2501.019.00.0	90	46	1,5	8	3,5	yellow passivated	20 7,3
2501.019.71.0	90	46	1,5	8	3,5	zinc plated	20 7,3
2501.100.00.0	100	52	1,6	8	4,0	yellow passivated	20 9,5
2501.100.71.0	100	52	1,6	8	4,0	zinc plated	20 9,5

punched Form A	A	B	s	screws	surface	packing weight unit	weight
	height	width	thickness				
article-no.	mm	mm	mm	pcs.	mm		kg / %
2501.012.02.0	30	22	0,8	4	2,5	raw	50 0,8
2501.013.02.0	40	26	0,9	4	2,5	raw	50 1,2
2501.015.02.0	50	31	1,1	6	3,0	raw	20 2,1
2501.016.02.0	60	34	1,2	6	3,0	raw	20 3,0
2501.018.02.0	80	41	1,5	6	3,5	raw	20 5,4
2501.100.02.0	100	52	1,5	8	4,0	raw	20 8,8



Stainless steel

unpunched DIN 7954 A	A	B	s	screws	surface	packing weight unit	weight
	height	width	thickness				
article-no.	mm	mm	mm	pcs.	mm		kg / %
2501.013.01.0	40	26	0,9		raw	50	1,2
2501.015.01.0	50	31	1,2		raw	20	2,1
2501.016.01.0	60	34	1,4		raw	20	3,1
2501.018.01.0	80	41	1,5		raw	20	4,8
2501.100.01.0	100	52	1,6		raw	20	9,5

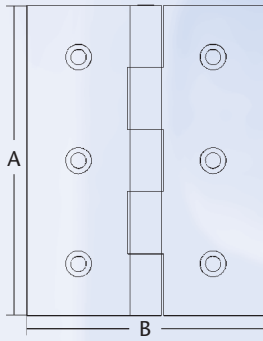
unpunched Form A	A	B	s	screws	surface	packing weight unit	weight
	height	width	thickness				
article-no.	mm	mm	mm	pcs.	mm		kg / %
2501.015.04.0	50	31	1,1	6	3,0	raw	20 2,1



Stainless steel

Rolled hinges DIN 7954

shape B
half wide



punched DIN 7954 B	A	B	s	screws	surface	packing weight unit	kg / %
	height	width	thickness				
article-no.	mm	mm	mm	pcs.	mm		
2501.020.00.0	25	22	0,8	4	2,5	yellow passivated	50 0,6
2501.020.71.0	25	22	0,8	4	2,5	zinc plated	50 0,6
2501.021.00.0	30	26	0,9	4	2,5	yellow passivated	50 0,9
2501.021.71.0	30	26	0,9	4	2,5	zinc plated	50 0,9
2501.022.00.0	40	32	0,9	4	2,5	yellow passivated	50 1,5
2501.022.71.0	40	32	0,9	4	2,5	zinc plated	50 1,5
2501.023.00.0	50	39	1,2	6	3,0	yellow passivated	20 2,6
2501.023.71.0	50	39	1,2	6	3,0	zinc plated	20 2,6
2501.024.00.0	60	46	1,4	6	3,0	yellow passivated	20 4,6
2501.024.71.0	60	46	1,4	6	3,0	zinc plated	20 4,6
2501.025.00.0	70	51	1,4	6	3,5	yellow passivated	20 5,5
2501.025.71.0	70	51	1,4	6	3,5	zinc plated	20 5,5
2501.026.00.0	80	58	1,5	6	3,5	yellow passivated	20 7,5
2501.026.71.0	80	58	1,5	6	3,5	zinc plated	20 7,5
2501.027.00.0	90	63	1,5	6	3,5	yellow passivated	20 9,0
2501.027.71.0	90	63	1,5	6	3,5	zinc plated	20 9,0
2501.028.00.0	100	72	1,6	8	4,0	yellow passivated	20 13,0
2501.028.71.0	100	72	1,6	8	4,0	zinc plated	20 13,0

punched Form B	A	B	s	screws	surface	packing weight unit	kg / %
	height	width	thickness				
article-no.	mm	mm	mm	pcs.	mm		
2501.022.02.0	40	32	0,9	4	2,5	raw	50 1,4
2501.023.02.0	50	39	1,1	6	3,0	raw	20 2,6
2501.024.02.0	60	46	1,2	6	3,0	raw	20 4,1
2501.026.02.0	80	58	1,5	6	3,5	raw	20 7,3
2501.028.02.0	100	72	1,5	8	4,5	raw	20 12,0



Stainless steel

unpunched DIN 7954 B	A	B	s	surface	packing weight unit	kg / %
	height	width	thickness			
article-no.	mm	mm	mm			
2501.024.01.0	60	46	1,4	raw	20	4,6
2501.026.01.0	80	58	1,5	raw	20	7,5

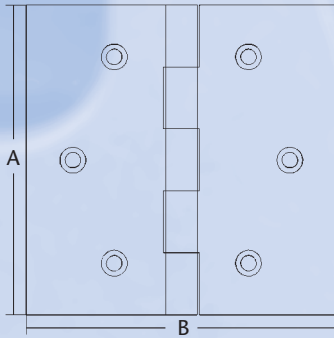
unpunched Form B	A	B	s	screws	surface	packing weight unit	kg / %
	height	width	thickness				
article-no.	mm	mm	mm	pcs.	mm		
2501.024.04.0	60	46	1,2	6	3,0	raw	20 4,1



Stainless steel

Rolled hinges DIN 7954

shape C
square



punched DIN 7954 C	A height	B width	s thickness	screws	surface	packing unit	weight unit
article-no.	mm	mm	mm	pcs.	mm	kg / %	
2501.031.00.0	25	25	0,8	4	2,5	yellow passivated	50 0,6
2501.031.71.0	25	25	0,8	4	2,5	zinc plated	50 0,6
2501.032.00.0	30	30	0,9	4	2,5	yellow passivated	50 0,9
2501.032.71.0	30	30	0,9	4	2,5	zinc plated	50 0,9
2501.033.00.0	40	40	0,9	4	2,5	yellow passivated	50 1,6
2501.033.71.0	40	40	0,9	4	2,5	zinc plated	50 1,6
2501.034.00.0	50	50	1,2	6	3,0	yellow passivated	20 3,1
2501.034.71.0	50	50	1,2	6	3,0	zinc plated	20 3,1
2501.035.00.0	60	60	1,4	6	3,0	yellow passivated	20 5,2
2501.035.71.0	60	60	1,4	6	3,0	zinc plated	20 5,2
2501.036.00.0	70	70	1,4	6	3,5	yellow passivated	20 7,2
2501.036.71.0	70	70	1,4	6	3,5	zinc plated	20 7,2
2501.037.00.0	80	80	1,5	6	3,5	yellow passivated	20 9,0
2501.037.71.0	80	80	1,5	6	3,5	zinc plated	20 9,0
2501.038.00.0	90	90	1,5	8	4,0	yellow passivated	20 12,0
2501.038.71.0	90	90	1,5	8	4,0	zinc plated	20 12,0
2501.039.00.0	100	100	1,6	8	4,0	yellow passivated	20 17,0
2501.039.71.0	100	100	1,6	8	4,0	zinc plated	20 17,0

punched Form C	A height	B width	s thickness	screws	surface	packing unit	weight unit
article-no.	mm	mm	mm	pcs.	mm	kg / %	
2501.032.02.0	30	30	0,8	4	2,5	raw	50 0,8
2501.033.02.0	40	40	0,9	4	2,5	raw	50 0,9
2501.034.02.0	50	50	1,0	6	3,0	raw	20 1,0
2501.035.02.0	60	60	1,25	6	3,0	raw	20 1,3
2501.036.02.0	70	70	1,25	6	3,5	raw	20 1,3
2501.037.02.0	80	80	1,5	6	3,5	raw	20 1,5
2501.039.02.0	100	100	1,5	8	4,0	raw	20 1,5

unpunched DIN 7954 C	A height	B width	s thickness	screws	surface	packing unit	weight unit
article-no.	mm	mm	mm	pcs.	mm	kg / %	
2501.032.01.0	30	30	0,9		raw	50	0,9
2501.033.01.0	40	40	0,9		raw	20	1,6
2501.034.01.0	50	50	1,2		raw	20	3,1
2501.035.01.0	60	60	1,4		raw	20	5,2
2501.039.01.0	100	100	1,6		raw	20	17,0

unpunched Form C	A height	B width	s thickness	screws	surface	packing unit	weight unit
article-no.	mm	mm	mm	pcs.	mm	kg / %	
2501.033.04.0	40	40	0,9	4	3,0	raw	20 0,9



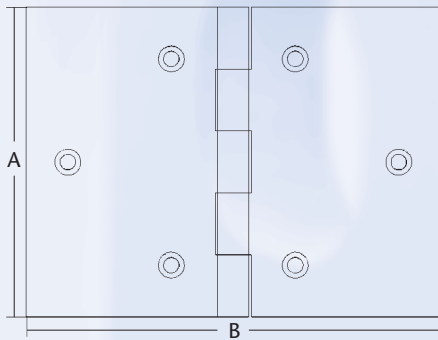
Stainless steel



Stainless steel

Rolled hinges DIN 7954

shape D
wide



punched DIN 7954 D	A	B	s	screws	surface	packing weight unit	kg / %
	height	width	thickness				
article-no.	mm	mm	mm	pcs.	mm		
2501.040.00.0	25	38	0,8	6	2,5	yellow passivated	50 0,8
2501.040.71.0	25	38	0,8	6	2,5	zinc plated	50 0,8
2501.041.00.0	30	45	0,9	6	2,5	yellow passivated	50 1,3
2501.041.71.0	30	45	0,9	6	2,5	zinc plated	50 1,3
2501.042.00.0	40	60	1,2	6	3,0	yellow passivated	20 2,9
2501.042.71.0	40	60	1,2	6	3,0	zinc plated	20 2,9
2501.043.00.0	50	75	1,2	8	3,5	yellow passivated	20 4,7
2501.043.71.0	50	75	1,2	8	3,5	zinc plated	20 4,7
2501.044.00.0	60	90	1,4	8	3,5	yellow passivated	20 8,0
2501.044.71.0	60	90	1,4	8	3,5	zinc plated	20 8,0
2501.045.00.0	70	105	1,5	8	4,0	yellow passivated	20 11,0
2501.045.71.0	70	105	1,5	8	4,0	zinc plated	20 11,0
2501.046.00.0	80	120	1,8	8	4,0	yellow passivated	20 18,0
2501.046.71.0	80	120	1,8	8	4,0	zinc plated	20 18,0
2501.047.00.0	90	133	1,8	8	4,5	yellow passivated	10 21,0
2501.048.00.0	100	145	2,0	8	4,5	yellow passivated	10 29,0
2501.048.71.0	100	145	2,0	8	4,5	zinc plated	10 29,0

punched Form D	A	B	s	screws	surface	packing weight unit	kg / %
	height	width	thickness				
article-no.	mm	mm	mm	pcs.	mm		
2501.041.02.0	30	45	1,0	6	3,0	raw	50 1,4
2501.042.02.0	40	60	0,9	6	3,0	raw	20 2,4
2501.043.02.0	50	75	1,2	8	3,5	raw	20 4,5
2501.044.02.0	60	90	1,2	8	3,5	raw	20 6,6
2501.046.02.0	80	120	1,5	8	4,0	raw	20 14,0



Stainless steel

unpunched DIN 7954 D	A	B	s	screws	surface	packing weight unit	kg / %
	height	width	thickness				
article-no.	mm	mm	mm	pcs.	mm		
2501.041.01.0	30	45	0,9		raw	50 1,3	
2501.044.01.0	60	90	1,4		raw	20 8,0	

unpunched Form D	A	B	s	screws	surface	packing weight unit	kg / %
	height	width	thickness				
article-no.	mm	mm	mm	pcs.	mm		
2501.044.04.0	60	90	1,2	8	3,5	raw	20 6,6



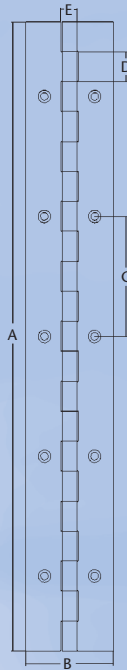
Stainless steel

Continuous rolled hinges

material: steel, brass, aluminium
 type of finish: steel bright, zinc plated, yellow passivated
 hole pattern: according to your request

punched	B	E	thickness	C	D	A
	open width	pin Ø		spacing of hole	pitch	length
article-no.	mm	mm	mm	mm	mm	mm
2801.020.00.0	20	1,75	0,7	60,4	15,0	3500
2801.025.00.0	25	1,75	0,7	60,4	15,0	3500
2801.028.00.0	28	1,75	0,7	60,4	15,0	3480
2801.032.00.0	32	1,75	0,7	60,4	15,0	3500
2801.040.00.0	40	1,75	0,7	60,4	15,0	3500
2801.050.00.0	50	1,75	0,7	60,4	15,0	3500
2802.025.00.0	25	1,75	1,0	60,5	15,0	3500
2802.028.00.0	28	1,75	1,0	60,5	15,0	3500
2802.032.00.0	32	1,75	1,0	60,5	15,0	3500
2802.040.00.0	40	1,75	1,0	60,5	15,0	3500
2802.050.00.0	50	1,75	1,0	60,5	15,0	3500
2803.028.00.0	28	3,00	1,0	50,8	12,7	1830
2803.032.00.0	32	3,00	1,0	50,8	12,7	1830
2803.038.00.0	38	3,00	1,0	50,8	12,7	1830
2803.050.00.0	50	3,00	1,0	50,8	12,7	1830
2804.040.00.0	40	6,00	2,0	90,0	30,0	3500
2804.050.00.0	50	6,00	2,0	90,0	30,0	3500
2804.060.00.0	60	6,00	2,0	90,0	30,0	3500
2804.070.00.0	70	6,00	2,0	90,0	30,0	3500
2804.080.00.0	80	6,00	2,0	90,0	30,0	3500
2804.100.00.0	100	6,00	2,0	90,0	30,0	3500

unpunched	B	E	thickness	D	A
	open width	pin Ø		pitch	length
article-no.	mm	mm	mm	mm	mm
2801.020.01.0	20	1,75	0,7	15,0	3500
2801.025.01.0	25	1,75	0,7	15,0	3500
2801.028.01.0	28	1,75	0,7	15,0	3480
2801.032.01.0	32	1,75	0,7	15,0	3500
2801.040.01.0	40	1,75	0,7	15,0	3500
2801.050.01.0	50	1,75	0,7	15,0	3500
2802.020.01.0	20	1,75	1,0	15,0	3500
2802.025.01.0	25	1,75	1,0	15,0	3500
2802.028.01.0	28	1,75	1,0	15,0	3500
2802.032.01.0	32	1,75	1,0	15,0	3500
2802.040.01.0	40	1,75	1,0	15,0	3500
2802.050.01.0	50	1,75	1,0	15,0	3500
2804.040.01.0	40	6,00	2,0	30,0	3500
2804.050.01.0	50	6,00	2,0	30,0	3500
2804.060.01.0	60	6,00	2,0	30,0	3500
2804.070.01.0	70	6,00	2,0	30,0	3500
2804.080.01.0	80	6,00	2,0	30,0	3500
2804.100.01.0	100	6,00	2,0	30,0	3500
2804.120.01.0	120	6,00	2,0	30,0	3500
2804.140.01.0	140	6,00	2,0	30,0	3500
2804.160.01.0	160	6,00	2,0	30,0	3500
2804.180.01.0	180	6,00	2,0	30,0	3500
2805.060.01.0	60	10,00	3,0	30,0	3000
2805.080.01.0	80	10,00	3,0	30,0	3000
2805.100.01.0	100	10,00	3,0	30,0	3000
2805.120.01.0	120	10,00	3,0	30,0	3000
2805.140.01.0	140	10,00	3,0	30,0	3000
2805.160.01.0	160	10,00	3,0	30,0	3000

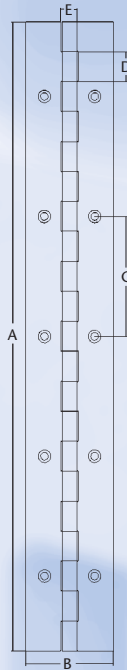


Piano hinges

material: stainless steel
 hole pattern: according to your request

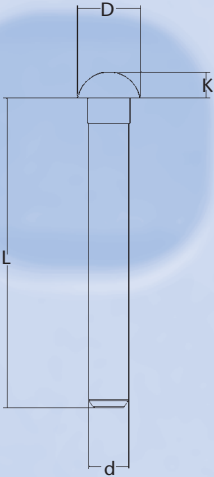
punched	B	E		C	D	A
open width	pin	thickness	spacing	pitch	length	
article-no.	mm	mm	mm	mm	mm	mm
2810.020.00.0	20	1,75	0,7	60,4	15,0	3500
2810.025.00.0	25	1,75	0,7	60,4	15,0	3500
2810.028.00.0	28	1,75	0,7	60,4	15,0	3500
2810.032.00.0	32	1,75	0,7	60,4	15,0	3500
2810.040.00.0	40	1,75	0,7	60,4	15,0	3500
2810.050.00.0	50	1,75	0,7	60,4	15,0	3500
2812.020.00.0	20	1,75	1,0	60,4	15,0	3500
2812.025.00.0	25	1,75	1,0	60,4	15,0	3500
2812.028.00.0	28	1,75	1,0	60,4	15,0	3500
2812.032.00.0	32	1,75	1,0	60,4	15,0	3500
2812.040.00.0	40	1,75	1,0	60,4	15,0	3500
2812.050.00.0	50	1,75	1,0	60,4	15,0	3500
2813.028.00.0	28	3,00	1,0	50,8	12,7	1830
2813.032.00.0	32	3,00	1,0	50,8	12,7	1830
2813.038.00.0	38	3,00	1,0	50,8	12,7	1830
2813.050.00.0	50	3,00	1,0	50,8	12,7	1830
2814.040.00.0	40	6,00	2,0	90,0	30,0	3500
2814.050.00.0	50	6,00	2,0	90,0	30,0	3500
2814.060.00.0	60	6,00	2,0	90,0	30,0	3500
2814.070.00.0	70	6,00	2,0	90,0	30,0	3500
2814.080.00.0	80	6,00	2,0	90,0	30,0	3500
2814.100.00.0	100	6,00	2,0	90,0	30,0	3500

unpunched	B	E		D	A
open width	pin	thickness		pitch	length
article-no.	mm	mm	mm	mm	mm
2810.020.01.0	20	1,75	0,7	15,0	3500
2810.025.01.0	25	1,75	0,7	15,0	3500
2810.028.01.0	28	1,75	0,7	15,0	3500
2810.032.01.0	32	1,75	0,7	15,0	3500
2810.040.01.0	40	1,75	0,7	15,0	3500
2812.020.01.0	20	1,75	1,0	15,0	3500
2812.025.01.0	25	1,75	1,0	15,0	3500
2812.028.01.0	28	1,75	1,0	15,0	3500
2812.032.01.0	32	1,75	1,0	15,0	3500
2812.040.01.0	40	1,75	1,0	15,0	3500
2812.050.01.0	50	1,75	1,0	15,0	3500
2814.040.01.0	40	6,00	2,0	30,0	3500
2814.050.01.0	50	6,00	2,0	30,0	3500
2814.060.01.0	60	6,00	2,0	30,0	3500
2814.070.01.0	70	6,00	2,0	30,0	3500
2814.080.01.0	80	6,00	2,0	30,0	3500
2814.100.01.0	100	6,00	2,0	30,0	3500
2814.120.01.0	120	6,00	2,0	30,0	3500
2814.140.01.0	140	6,00	2,0	30,0	3500
2814.160.01.0	160	6,00	2,0	30,0	3500
2814.180.01.0	180	6,00	2,0	30,0	3500
2815.060.01.0	60	10,00	3,0	30,0	3000
2815.080.01.0	80	10,00	3,0	30,0	3000
2815.100.01.0	100	10,00	3,0	30,0	3000
2815.120.01.0	120	10,00	3,0	30,0	3000
2815.140.01.0	140	10,00	3,0	30,0	3000
2815.160.01.0	160	10,00	3,0	30,0	3000



Hinge pins

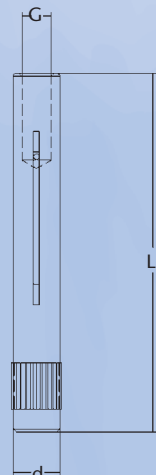
Round head hinge pin
Material S235JR



Collar grease pins inside thread and oil groove
Material S235JR



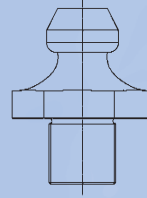
Grease pins inside thread and oil groove
Material S235JR



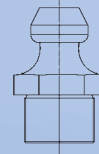
Technical modifications reserved.

Grease nipples

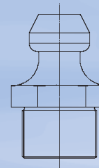
Conical head grease nipples
similar DIN 71412



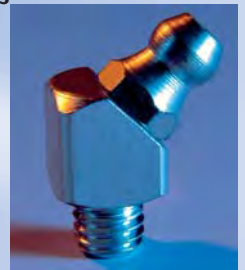
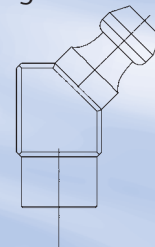
Conical head grease nipples
with self cutting thread
according DIN 71412



Conical head grease nipples



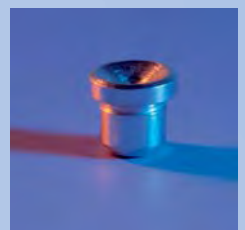
Conical head grease nipples
according DIN 71412



Conical head grease nipples
to press in
according DIN 71412



Flat grease nipples
to press in
according DIN 71412



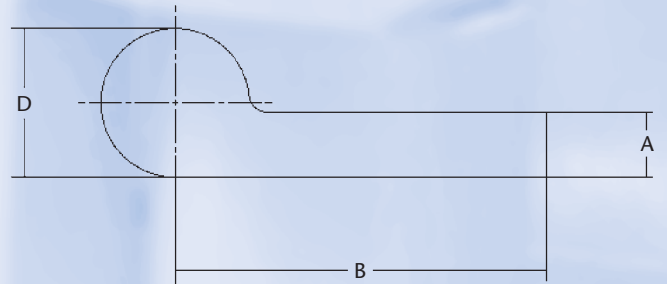
Raw material

casting parts:	GGG GTS GTW
extruded section:	S235JR aluminium brass stainless steel 1.4301
pressure die-casting:	aluminium zinc
forging parts:	S235JR, S355J2G3 aluminium stainless steel

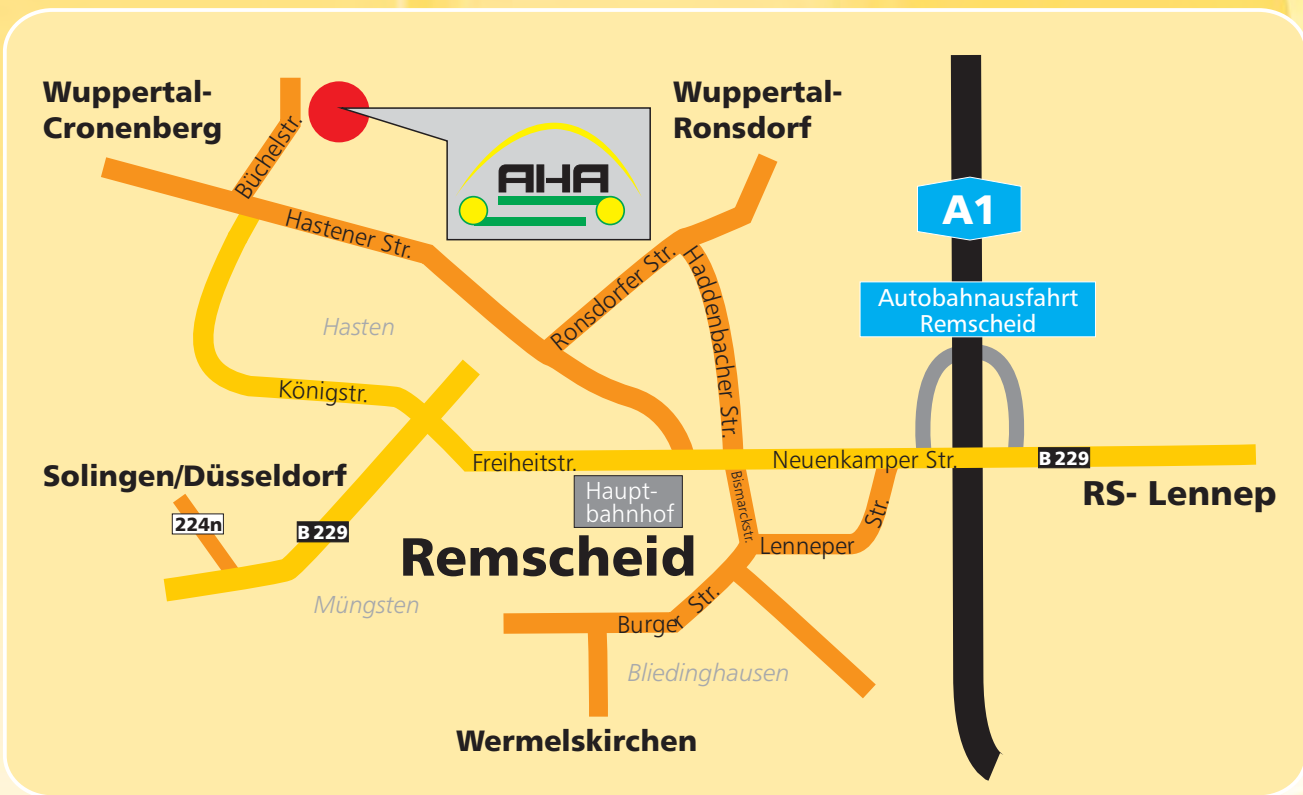
hot rolled strip, cold rolled strip, stainless steel strip

hot rolled section material Fe 360 EN 10025				
material	D	A	B	kg/m
60003	8,0	3,0	60	1,65
60007	12,0	5,0	60	3,08
60009	12,0	5,0	100	4,66
60010	12,0	5,0	120	5,42
60005	13,2	3,5	85	3,28
60047	14,8	5,8	80	4,76
60015	14,8	5,8	100	5,68
60016	14,8	5,8	120	6,60
60017	14,8	5,8	150	8,01
60012	16,0	5,0	69	4,15
60022	16,3	6,8	40	3,49
60023	16,3	7,1	80	5,76
60024	16,3	7,1	100	6,89
60025	16,3	7,1	120	8,01
60026	16,3	7,1	150	9,66
60027	18,3	7,8	200	13,90
60281	21,0	6,0	110	7,80
60032	26,0	10,0	110	12,10

hot rolled section material 1.4301				
material	D	A	B	kg/m
10369	12,0	5,0	50	2,75



Further profiles on request.



Automobilcharniere Hasten GmbH + Co. KG

Büchelstraße 24-26
 D-42855 Remscheid / Germany
 Telefon +49 (0)2191 - 88 63-0
 Telefax +49 (0)2191 - 88 63-25

vertrieb@aha-rs.de
 www.aha-rs.de
 www.carhinges.com